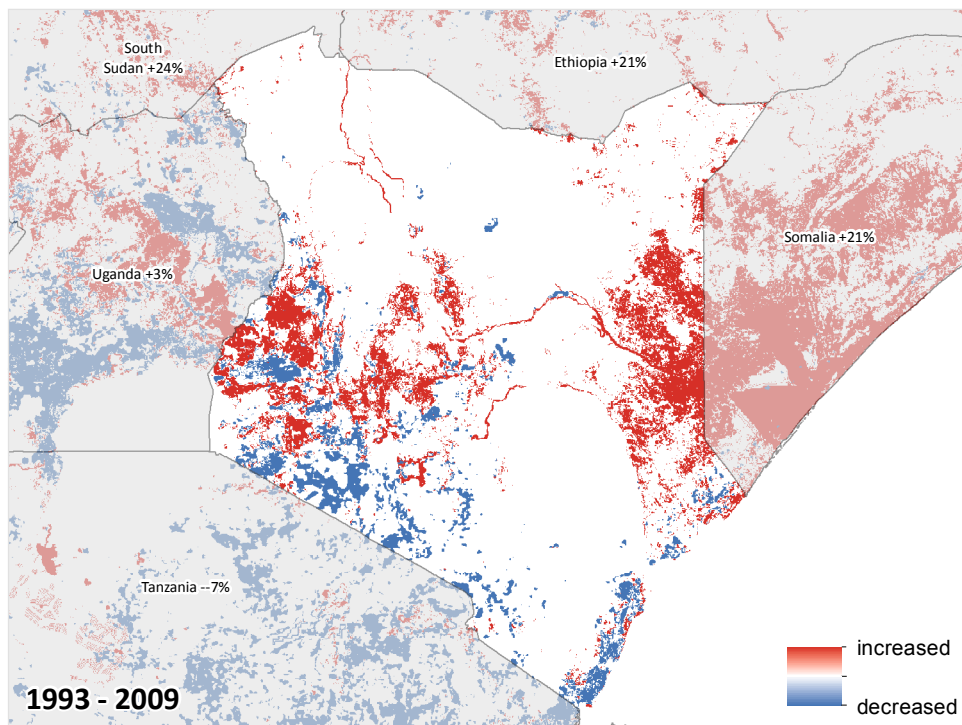
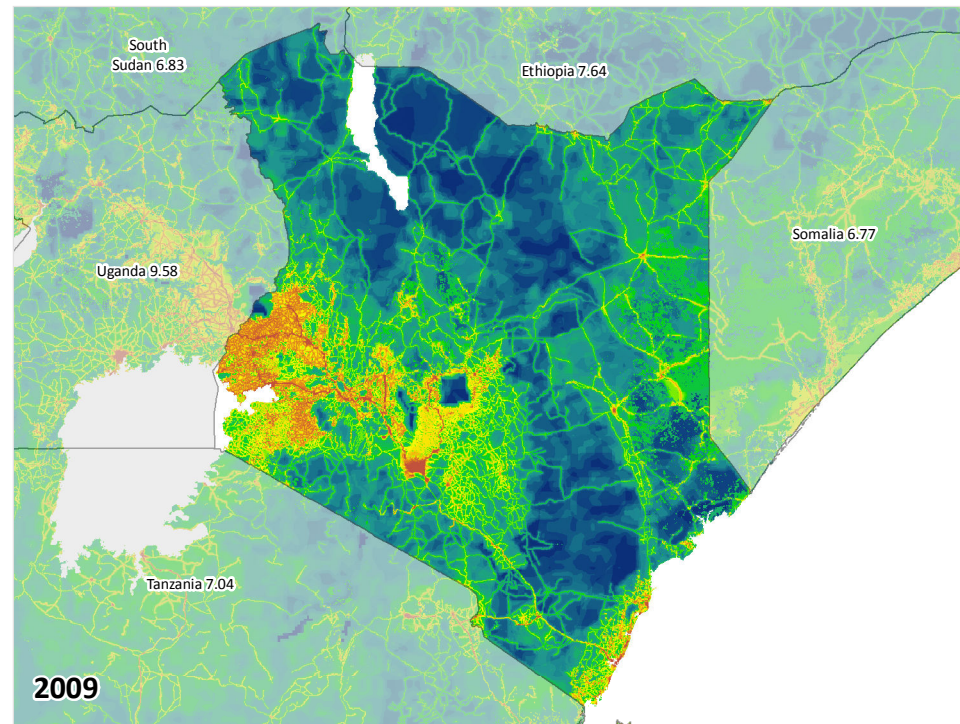
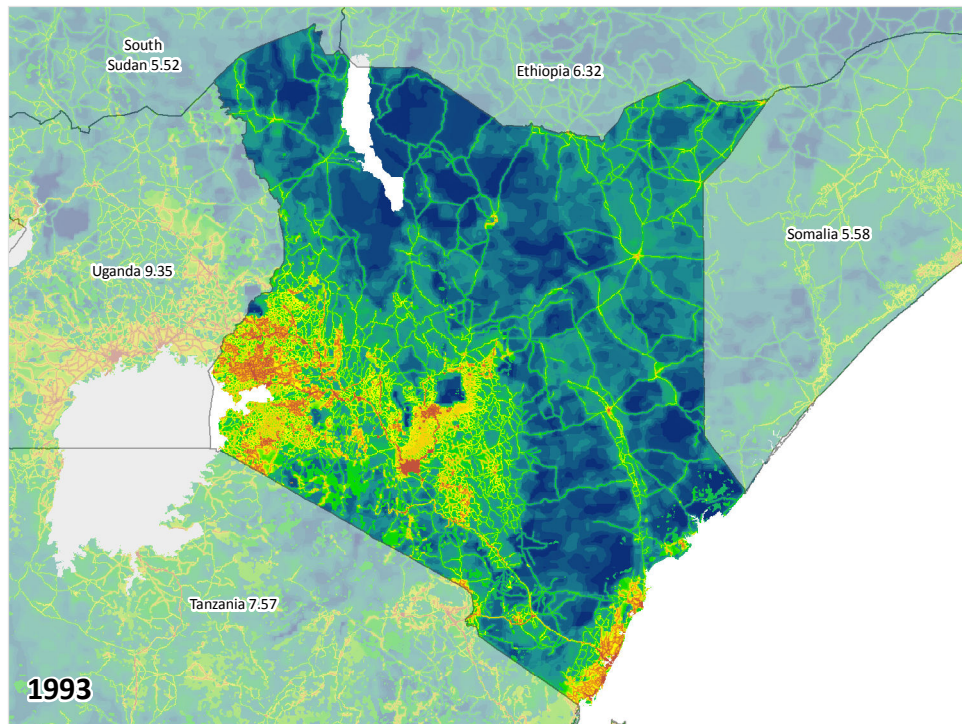


Kenya's human footprint on the environment 1993 - 2009



Human Footprint mean, population, and GDP

| | 1993 | 2009 | change | % change |
|----------------------------|---------------|----------------|----------------|----------|
| Human Footprint mean | 5.97 | 6.88 | 0.92 | 15.37% |
| Population | 25.8 million | 39.3 million | 13.4 million | 52.06% |
| GDP PPP (constant 2011 \$) | \$5.8 billion | \$37.0 billion | \$31.3 billion | 543.65% |

Wild (0)

Developed (50)



The human footprint map measures the cumulative impact of direct pressures on nature from human activities, based on eight inputs.

Venter et al. 2016. Sixteen years of change in the global terrestrial human footprint and implications for biodiversity conservation. Nature Communications 7:12558. DOI:10.1038/ncomms12558.

Data access: <http://dx.doi.org/10.5061/dryad.052q5>



THE UNIVERSITY OF QUEENSLAND AUSTRALIA

